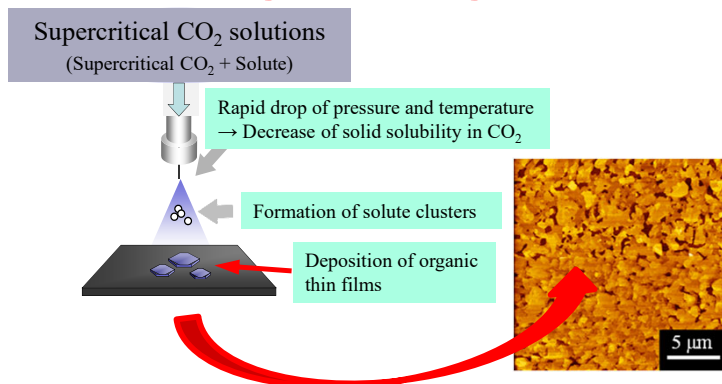


Division of Frontier Engineering (Chemical Engineering)

◆ Chemical process engineering



Professor
Hirohisa UCHIDA



Development of environmentally friendly materials production using supercritical CO₂

◆ Environmental and energy engineering

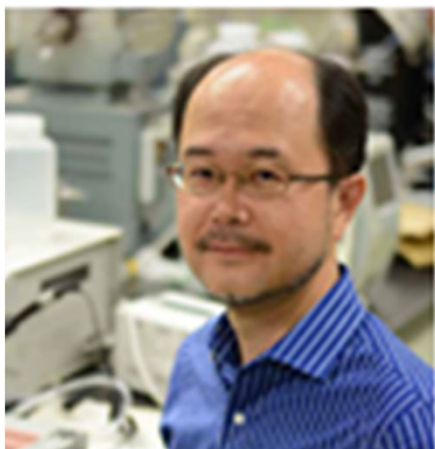


Professor
Mikio KUMITA



Associate Professor
Noboru TKIGUCHI

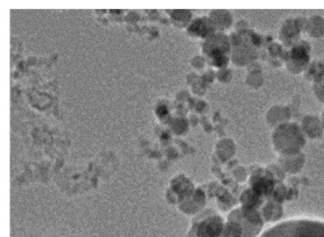
◆ Microparticles system



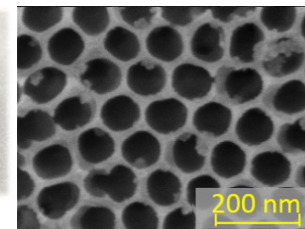
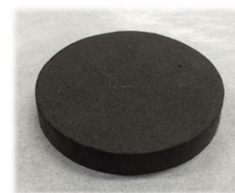
Professor
Takafumi SETO



Associate Professor
Yayoi INOMATA



Nanodiamond



Innovations in environmental technology and effective use of energy through chemical engineering

Development of air comfort needed in future mobility spaces and of synthesis methods for nano-particles and -materials